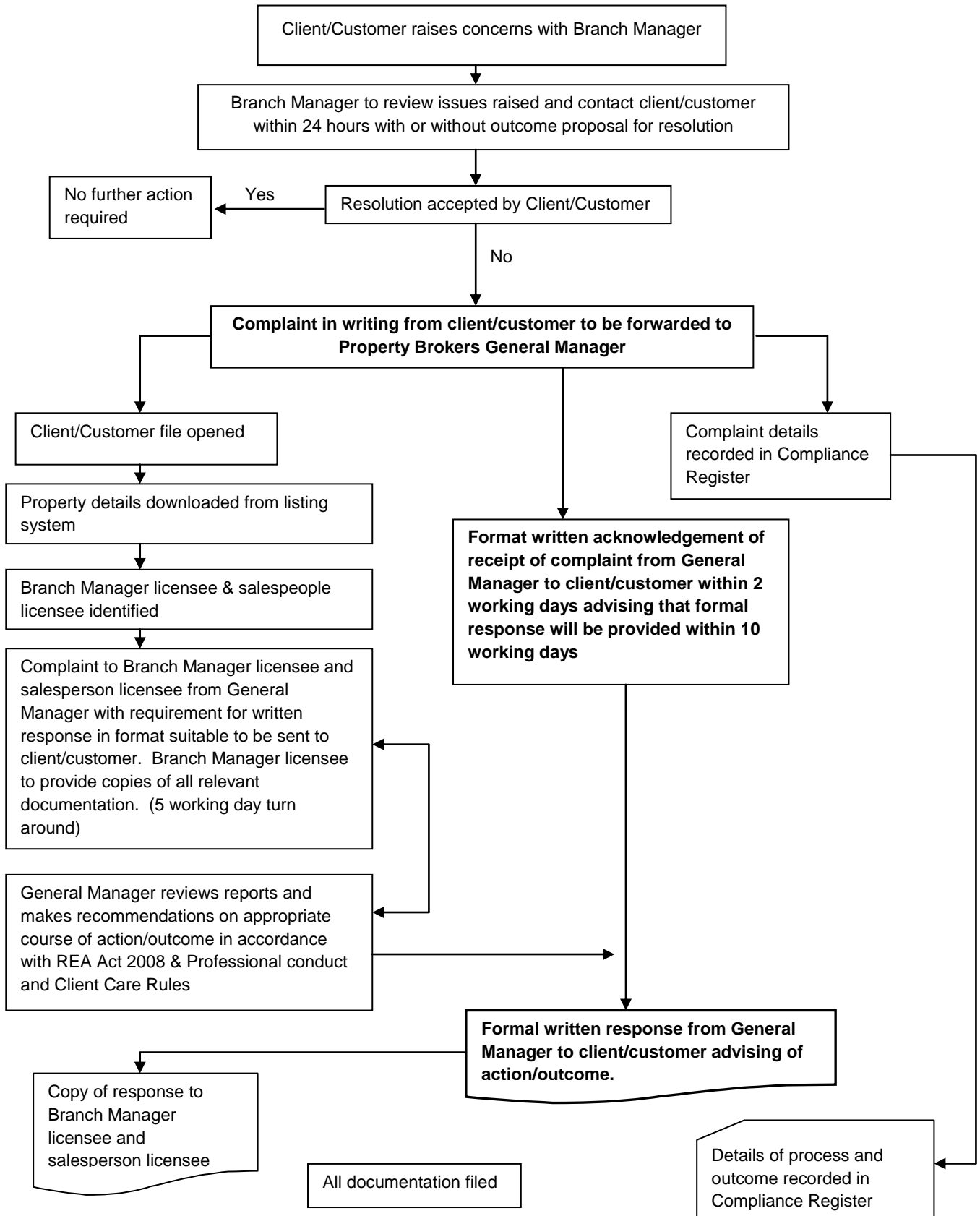




Property Brokers Ltd In-house Complaint Process

(Real Estate Agents Act 2008
Professional Conduct and Client Care Rules)



Note: This process does not preclude the matter from being referred to the Real Estate Agents Authority. The Authority may be contacted at:

The Real Estate Agents Authority
C/- P O Box 25-063
Wellington 6146
New Zealand
www.reaa.govt.nz